

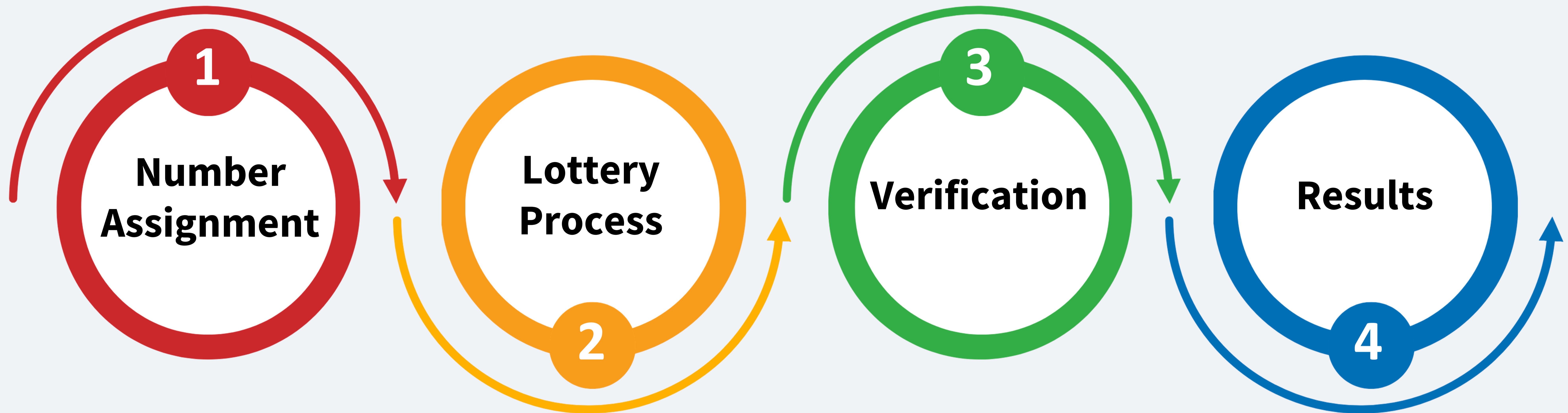
# Illinois Lottery Draw Process for Social Equity Criteria Lottery



**IDFPR**  
Illinois Department of  
Financial and Professional Regulation

Using a specialized computer, the Illinois Lottery will conduct a drawing of all applicants that will be ranked in a random order for the Social Equity Criteria Lottery (SECL). IDFPR will use the ranking to determine who is drawn in an eligible position for a Conditional License based on the number of licenses available in a particular BLS Region.

## Social Equity Criteria Lottery Process



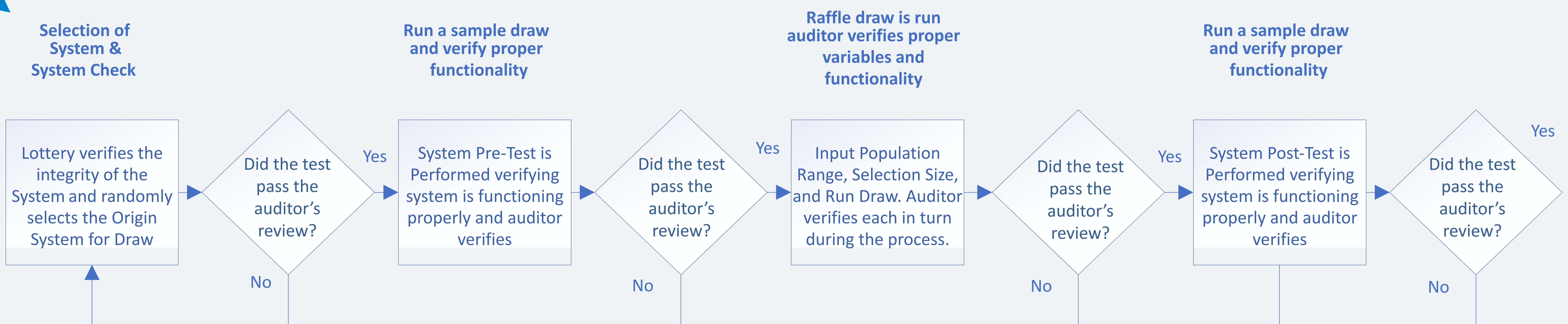
- Each eligible application is assigned a lottery number
- IDFPR publishes this list
- IDFPR provides the Lottery with the population of eligible applicants for each BLS Region.

The Illinois Lottery uses a computer-based draw process to randomly draw numbers.

See below for the Illinois Lottery's Draw Process

After the auditor verifies the drawing results, the Lottery provides the drawing results to IDFPR.

- IDFPR matches the lottery numbers drawn to the applicant names.
- IDFPR publishes the results on its website.



## Additional Information

- Lottery results will be posted the same day the Social Equity Criteria Lottery is conducted.
- The lottery will have 17 separate drawings, one for each BLS region.